



**\*\*AVAILABLE JULY 2026\*\* \*\*RECENTLY REFURBISHED FIRST FLOOR FLAT\*\***

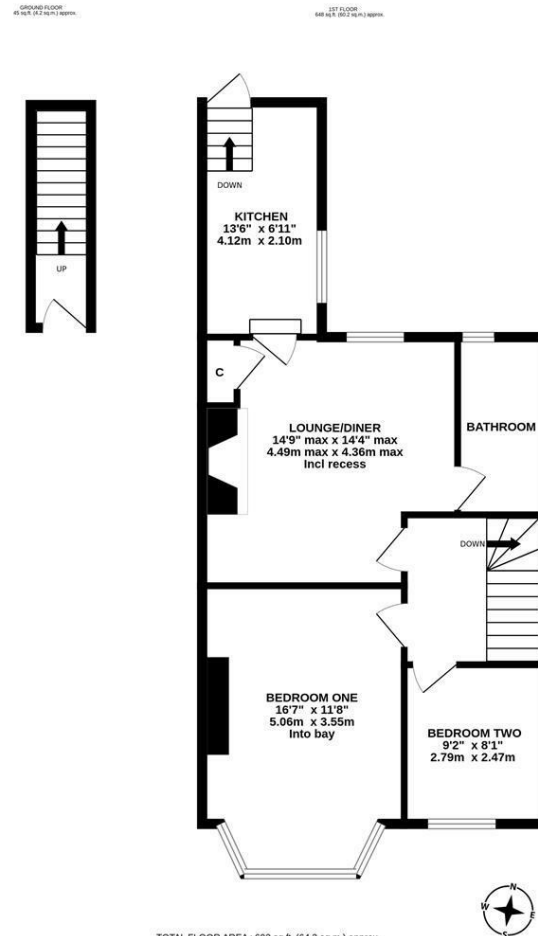
**\*\*FURNISHED\*\*** This two bedroom upper floor 'Tyneside' flat is ideally located on Grosvenor Gardens, Jesmond Vale. Situated close to Jesmond Dene, the cafés, shops and restaurants of Jesmond, excellent local transport links and indeed Newcastle City Centre itself, Jesmond Vale is the perfect location for professional buyers.

Recently renovated throughout in late 2024 to a very high standard, the accommodation briefly comprises; entrance hall with stairs to first floor landing; lounge/diner measuring close to 15ft with laminate wood flooring; bespoke kitchen with fitted units, granite work surfaces, some integrated appliances, feature vaulted ceiling with Velux window and spot lighting together with stairs down to the rear yard; generous modern shower room WC, fully tiled with three piece suite and spot lighting; two bedrooms, bedroom one measuring 16ft with decorative ceiling rose and walk in bay. Externally, an enclosed rear yard with wall boundaries and gated access to the rear service lane. On street parking to the front.

Available on a furnished basis, with double glazing and gas central heating, this exemplary flat is not to be missed!

Available 25th July 2026 | £1,250pcm | First Floor 'Tyneside' Flat | 692 Sq ft (64.3m<sup>2</sup>) | Refurbished Throughout In 2024 | Two Bedrooms | Lounge/Diner | Bespoke Kitchen | Modrn Shower Room WC | Private Rear Yard | DG & GCH | Popular Location | Furnished | On Street Parking | Council Tax Band: B | EPC Rating: Bc

**£1,250 PCM**



TOTAL FLOOR AREA: 692 sq.ft. (64.3 sq.m.) approx.  
 Whilst every attempt has been made to ensure the accuracy of the floorplan contained herein, measurements of doors, windows, rooms and any other items are approximate and no responsibility is taken for any error, omission or mis-statement. This plan is for illustrative purposes only and should be used in such to any prospective purchaser. The services, systems and appliances shown have not been tested and no guarantee as to their operability or efficiency can be given.  
 Made with Metropix ©2024

**IMPORTANT NOTE:** These particulars and the descriptions and measurements herein do not constitute representation and whilst every effort has been made to ensure accuracy, this cannot be guaranteed.

